

Notice of meeting of

Schools Organisation Committee

Date: Wednesday, 21 June 2006

Time: 6.00 pm (There will be a buffet from 5.30pm)

Venue: Eccles Building, Burnholme Community College,
York

Membership:

Councillor K Aspden	Members Group (Liberal Democrat)
Councillor A Jones	Members Group (Labour)
Councillor V Kind	Members Group (Labour)
Councillor D Livesley	Member Group (Liberal Democrat)
Councillor C Runciman	Member Group (Liberal Democrat)
Mr J Harris	Schools (Headteacher)
Vacancy	Schools (Headteacher)
Mrs Sue Williams	Schools (Headteacher)
Vacancy	Schools (Headteacher)
Ms F Barclay	Schools (Teachers)
Ms B Reagan	Schools (Teachers)
Vacancy	Schools (Teachers)
Dr A Lees	Diocese (CE)
Dr D Sellick	Diocese (CE)
Vacancy	Diocese (CE)
Vacancy	Diocese (RC)
Ms C Duffy	Diocese(RC)
Vacancy	Diocese (RC)
Mr S Brereton	Governor Group
Mrs J Ellis	Governor Group
Mr B Ferguson (Chair)	Governor Group
Mrs L Heslop	Governor Group
Mr J Porteous	Governor Group
Vacancy	Governor Group
Vacancy	Governor Group
Ms Liz Burdett	Learning and Skills Council

A G E N D A

1. Changes to Membership

To note any changes to Membership as detailed on the agenda.

2. Apologies and Substitutes

To note any apologies received and attendance of substitute members.

3. Declarations of Interest

To declare any interests in relation to the items on this agenda.

4. Minutes and Matters Arising (Pages 1 - 6)

To agree and sign the minutes of the last meeting held on 24 April 2006.

5. Public Participation

At this point in the meeting members of the public who have registered their wish to speak regarding an item on the agenda or an issue within the Committee's remit can do so. Anyone who wishes to register or requires further information is requested to contact the Democracy Officer on the contact details listed at the foot of this agenda. The deadline for registering is Tuesday 20 June at 10.00am.

6. Projected Special School Rolls (Pages 7 - 20)

This report shows the historical trend for special school numbers in the City of York and projected rolls through to 2013.

7. Proposals for the Enlargement and Relocation of Manor Church of England Secondary School (VA) (Pages 21 - 32)

To consider the report of the Governors of Manor CE Secondary School regarding proposals for the enlargement and relocation of Manor Church of England Secondary School (VA).

8. Date and Time of the Next Meeting - 2006

9. Any Other Business

To consider any other business the Chair decides is urgent under the provisions of the Local Government Act 1972.

Democracy Officer:

Name: Jill Pickering

- Telephone – (01904) 552030
- E-mail – jill.pickering@york.gov.uk

For more information about any of the following please contact the Democracy Officer responsible for servicing this meeting:

- Registering to speak
- Business of the meeting
- Any special arrangements
- Copies of reports

Contact details are set out above.

This page is intentionally left blank

**CITY OF YORK
SCHOOL ORGANISATION COMMITTEE**

**MINUTES OF THE MEETING HELD AT BURNHOLME COMMUNITY
COLLEGE ON 24 APRIL 2006**

Members Group:

†Councillor Keith Aspden
*Councillor Viv Kind
†Councillor David Livesley
*Councillor Carol Runciman
*Councillor David Scott

Teachers

*Ms FM Barclay
†Ms L Johnson
*Ms B Reagan

Diocese (Church of England):

*Dr A Lees
*Dr David Sellick
†Mr David Thewlis

Learning and Skills Council:

†Ms Liz Burdett

In attendance:

Patrick Scott, Director of Learning Culture
and Children's Services
Kevin Hall, Assistant Director (Resource
Management)
Maggie Tansley, Head Planning and
Resources, Learning Culture & Children's
Services
Jake Wood, Policy Officer, Learning
Culture & Children's Services

Governor Group:

*Mr Steve Brereton
*Mrs Jona Ellis
*Mr Barrie Ferguson (Chair)
†Mrs Lynne Heslop
*Mr Jim Porteous

Headteachers:

*Mrs Jenny Smith
†Mr John Harris
†Mrs Sue Williams

Diocese (Catholic Church):

†Reverend Michael Bayldon
†Ms Carolyn Duffy

*Indicates member present
†Indicates apologies received

22. CHANGES TO MEMBERSHIP.

It was reported that there were the following changes in membership

Liz Burdett, Regional Director, Learning and Skills Council to replace David Harbourne
Mrs J Smith, School (Headteacher) had retired
Ms L Johnson, School (Teacher) had resigned

23. APOLOGIES AND SUBSTITUTES.

Apologies were received from: Councillor Aspden, Councillor Livesley, Ms Liz Burdett, Mrs S Williams, Carolyn Duffy and Mr David Thewlis.

24. DECLARATIONS OF INTEREST

The Chair advised that any declarations of interest in relation to business on the current agenda should be made under this item. The following general personal interest was declared:

Mr B Ferguson – Chair of Governors at Woodthorpe School.

He exercised his right to remain in the room and took part in the discussion.

25. MINUTES AND MATTERS ARISING

Officers updated that the report on Special School and Secondary School numbers together with School Admissions noted in the minutes for discussion at today's meeting had been delayed.

RESOLVED: That the Minutes of the meeting held on 31 October 2005 be approved and signed as a correct record.

26. PUBLIC PARTICIPATION

It was reported that no members of the public had registered to speak at the meeting.

27. PROPOSALS FOR THE MERGER OF LOWFIELD SCHOOL AND OAKLANDS SCHOOL

The Committee considered a report which informed them of the outcome of the recent consultation following the publication of statutory notices proposing a new secondary school on the west side of the city.

Members were reminded that the proposal had been driven by the decline in pupil numbers on the west side of the city and also the need to radically improve the condition of the existing buildings. It was proposed that a new school would open on the existing Oaklands school site to accommodate students from both schools once they were closed. The report also made reference to the proposed expansion and relocation of Manor School which was also subject to consultation.

Consideration was also given to Annex 1 which summarised the proposals for the expansion and relocation of Manor School and Annex 2 an information leaflet prepared for parents, carers, pupils and the local community which provided background information on the proposals for a new secondary school for the west of York.

The Committee viewed a DVD which featured students, staff and governors of Lowfield and Oaklands Schools and which described the proposals and explaining the need for the change. It was noted that the DVD had been used during the consultation events.

Officers confirmed that as no objections had been received to the proposal the local education authority, rather than the School Organisation Committee were permitted to make the final decision at a meeting of the Executive. In view of the importance of the proposals it had been thought appropriate for the SOC to consider the matter and to inform the Executive of its views. In answer to questions Officers explained the timescales for the changes with a 2 phase building programme over 2 to 3 years during which both sites would be use to minimise disruption to pupils.

The following was raised at the meeting:

- Compliments to Officers on the consultation work and the well prepared DVD.
- Need to use this experience to keep all consultees in touch with progress, school naming etc
- As this was a merger of schools and there was a need to examine staff surveys from previous mergers to ensure that any changes necessary were made and staff were part of the changes.

RESOLVED: i) That the Committee note that Statutory notices were published on February 24th proposing the following changes to school organisation in accordance with the School Standards and Framework Act 1998:

- In accordance with section 29(1) of the Act to discontinue Oaklands School, Cornlands Road, Acomb, with effect from 31 August 2007.
- In accordance with section 29(1) of the Act to discontinue Lowfield School, Dijon Avenue, Acomb, with effect from 31 August 2007.
- In accordance with section 28(1) of the Act to establish a new Community Secondary school for 1050 boys and girls between the ages of 11 and 16 from 01 September 2007. The number of pupils to be admitted to the school at age 11 from 01 September 2007 and in subsequent years will be 210. The new school will open on 1 September 2007, and will operate initially on a split site basis on the sites of Oaklands and Lowfield Schools.
 - ii) That the Committee note that the proposals are supported by the governing bodies of both schools.
 - iii) That the Committee note that no objections were received during the six week statutory

“representation” period following publication of statutory notices.

- iv) That the Executive be advised that the School Organisation Committee support the proposals for the merger of Lowfields and Oaklands Schools and that they look forward to the building of a new school on the west side of the city.

28. MANOR SCHOOL REDEVELOPMENT

The Committee received a verbal report from the Director of Learning Culture and Children’s Services who updated the Committee on the proposed Manor School Redevelopment.

He explained that following consultation support had been given for the replacement of Oaklands and Lowfields with a single school and the expansion of Manor School. It was proposed to expand Manor School from 624 to 900 pupils and to replace the existing building with new school building. The site at Millfield Lane had been considered as the only viable site option as there was no other suitable site in the Priority Action Zone covered by Rufforth Primary, Carr and Poppleton Ousebank Schools. A £13.5 million grant had been received towards the £17million costs

Members were informed that local views had been sought on the use of the Millfield Lane site which was situated in Green Belt. Although only 15% of the site would be used for the school buildings the remaining land would be used for school playing fields and recreational open space.

It was reported that there had been no real objections received from residents at the Ward Committee meetings but there had been some concern regarding access and the increased volume of traffic. Lesser concerns had related to the nature of the design, possible problems resulting from light pollution, community use of the site and the use of the existing site for development. The only other strong view related to the possibility of developing a Sixth Form on the site. It was pointed out that in the Strategic Area Review it had been decided to keep the current pattern of post 16 Education in the area and that there was no money or land available for this provision.

Following consultation there would be statutory consultation and public notice given of the proposed increase in school numbers which would be followed by a planning application and further consultation. It was pointed out that the Diocese had worked in a dual role with the authority during the process.

The following points were raised at the meeting:

- Had account been taken of the increased number of pupils in the schools catchment area arising from development of the existing school site?

- When the sale of the existing school site took place the Diocese would ensure that the money went towards the financing of the new school.
- That the access to the new site would be via Millfield Lane.
- The school was its own admission authority which could set its own policy but that there were still constraints. The current policy admitted 60% of pupils on faith grounds which would continue but it was felt that the number of community places would increase considerably.

RESOLVED: i) That the Officers be thanked for their update on the redevelopment of Manor School.

ii) That Officers prepare a report on projected primary school numbers for schools in the catchment area together with the possible impact on the new school.

29. FUTURE OF THE SCHOOL ORGANISATION COMMITTEE

A verbal report was given on the Education and Inspection Bill which would receive royal assent in November. One of the provisions of the Bill was the abolition of the Schools Organisation Committees with decisions being taken directly by local authorities.

Officers referred to the Local Admissions Forum which dealt with similar business to SOC but from a slightly different point of view. It was pointed out that the Forum possibly needed to be more high profile with a review being undertaken of its role. It was pointed out that it would be possible to give further consideration to the combination of the two bodies to provide some continuity and expertise before November.

Members commented as follows

- Agreement that there had been some duplication of roles with both bodies having similar membership.
- That the Schools Organisation Committee should be disbanded in the Autumn term.

RESOLVED: That the verbal report be noted.

30. DATE AND TIME OF THE NEXT MEETING - 2006

Special School numbers, Secondary School numbers, a report on projected school numbers and the impact on Manor School and a report on the possible forum that should come into place if SOC was abolished were to be discussed at the next meeting.

RESOLVED: That Officers in liaison with the Chair arrange the date of the next meeting of the Schools Organisation Committee in September 2006.

SIGNED

Mr Barrie Ferguson, Chair

The meeting started at 6.00 pm and finished at 7.15 pm.



School Organisation Committee

21 June 2006

Report of the Director of Learning, Culture and Children's Services

PROJECTED SPECIAL SCHOOL ROLLS

Summary

1. This report shows the historical trend for special school numbers in the City of York and projects rolls through to 2013. The committee is asked to note the report.

Background

2. The local authority closed down the 4 special schools in the city in 2004 and replaced them with 2 new schools, both of which are now fully operational and in new premises. Both schools were built for rolls of approximately 120. Currently, there are fewer than 100 pupils at Hob Moor Oaks and over 140 pupils at Applefields. Members need to understand why this is the case and what action, if any, is required to address the capacity issues.
3. The data in Chart 1 clearly demonstrates that there has been a steady but significant reduction in the total number of pupils educated within day special schools from a high of 375 in 1998 to 225 in 2006. These figures reflect the successful implementation of the policy of inclusion, which of course involved reorganisation of special school provision from 4 school sites to the current 2. We have also been successful in making good provision for pupils with Moderate Learning Difficulties in both primary and secondary mainstream settings. We have also been successful in educating more pupils with Severe Learning Difficulties and other complex disabilities in early years settings and in primary schools. The impact of this has been reflected in the relatively low number of children in primary special school provision. At secondary level there has not been such a significant reduction in special school places for two main reasons:
 1. it has proved more difficult to support children with complex disabilities in mainstream secondary schools.
 2. relatively more pupils are staying on for years 12 – 14, rather than leaving school at year 11 (mainly to attend College based provision).
4. Chart 2 shows the number of children in special schools across each of the National Curriculum year groups. From this it is clear that the number of children in the secondary special school is not being replicated in the primary school, for the reasons given, above. On this basis, the roll at Applefields will

fall unless children move into the school from mainstream schools or from other authorities.

5. Charts 3 and 4 show the projected roll for Applefields over the coming 8 years, based on the assumption of no pupils arriving from mainstream schools and then based on the assumption that 4 pupils will transfer each year onto the roll of Applefields. Both models assume that all pupils on roll will move into the school's 6th form. Chart 3 shows that the school roll will grow to a peak in 2007 and will fall below the capacity figure from 2011. Chart 4 shows that the school will fall below its capacity figure from 2013. Neither model takes into account desirable changes in inclusion practice in mainstream secondary schools.
6. An analysis of current pupils in mainstream primary schools who may transfer to a special school with the designation of Hob Moor Oaks or Applefields shows that there are 8 pupils who are being closely monitored and who are considered to be suitable for places in special schools. This averages out at less than 2 each year group.
7. Both models also assume that there will be no change in placement practice from North Yorkshire and East Riding. There are currently 31 children at Applefields and 13 at Hob Moor Oaks from these authorities. We continue to receive new applications at the rate of, on average, 2 a year and at present there are no indications of this figure declining. No doubt NYCC would prefer to place pupils in its own special schools for reasons of cost (particularly transport), but parental preference is all important here. It is possible that the new provision at Hob Moor Oaks will attract more parents rather than less.
8. The reason for the bigger than expected roll at Applefields is made clear in Chart 5. This chart shows current and projected numbers in Years 12-14 at Applefields – post 16 provision. This clearly demonstrate a significant upward trend, assuming all pupils continue into this provision (this was the assumption made in Charts 3 and 4). When this information is compared with category of need data, it seems clear that the growth is accounted for by more pupils with Moderate Learning Difficulties staying on than would have been expected under the previous arrangements. The total increase in numbers in the 3 core categories of need (ASC, SLD, PMLD) met by the two special schools is very small over the last 3 years – a growth of 13 pupils. In the past most of the pupils with Moderate Learning Difficulties would either have left school at 16 or would have gone on to college placements. We do of course have to be careful in interpreting data about categories because the boundaries are imprecise and in any case it could well be argued that these children should be entitled to access special school provision up to 19. However it could also be argued that we are apparently expanding this kind of provision without specific planning or policy decision. Moving from 26 places in 2002 to a projected 68 in 2008 is a major increase with obvious financial consequences.
9. There are a number of existing or proposed actions which will impact on the capacity on the Applefields site. These include:

- Encouraging capacity in mainstream generally – part of the current inclusion strategy and enhanced by delegating SEN funding to schools.
 - Develop capacity in mainstream through enhanced resource schools – the most recent example being the opening of an ASC unit at Fulford School.
 - Establish satellite provision from Applefields in a mainstream school. New build opportunities may help this process but more detailed work would be required.
 - Encourage development of provision in York College, particularly for MLD. Preliminary meetings have been held with the college and there is scope for further work, particularly when the college is located on its new site.
 - Designate Years 12 – 14 provision at Applefields as available for PMLD/SLD/ASD pupils only.
 - Closely examine existing placement at Annual Review to consider possibility of reintegration into mainstream or College.
 - Encourage NYCC to develop provision in the Selby/Tadcaster area.
 - Turn down new applications on the grounds that the school is full (NYCC would then need to place their pupils elsewhere).
 - Purchase places for CYC pupils in NYCC schools.
10. The local authority, as admissions authority for Applefields School, could refuse future applications for places at the school, including those from Hob Moor Oaks, although legally we cannot treat pupils from North Yorkshire in any way differently to those from CYC.

Consultation

11. This report has been brought forward as a result of requests made by the governing body of Applefields school and through discussions at the Special School Headteachers group.

Options

12. This report is for information only.

Analysis

13. This report is for information only.

Corporate Objectives

14. This report is for information only.

Implications

15. This report is for information only.

Recommendations

16. The Committee is asked to note the report.

Contact Details

Author:

Murray Rose
Assistant Director (Access & Inclusion)
Learning, Culture & Children's
Services
Tel No. 613161 x 4350

Chief Officer Responsible for the report:

Patrick Scott
Director of Learning, Culture & Children's Services

Report Approved

Date

6/6/06

Specialist Implications Officer(s) *List information for all*

There are no specialist implications; this report is for information only.

Wards Affected: *List wards or tick box to indicate all*

All

For further information please contact the author of the report

I:\group\access&inclusion\pubserv\murray\soc special school rolls final.doc

Annexes

Chart 1 – Number on Roll in Day Special Schools

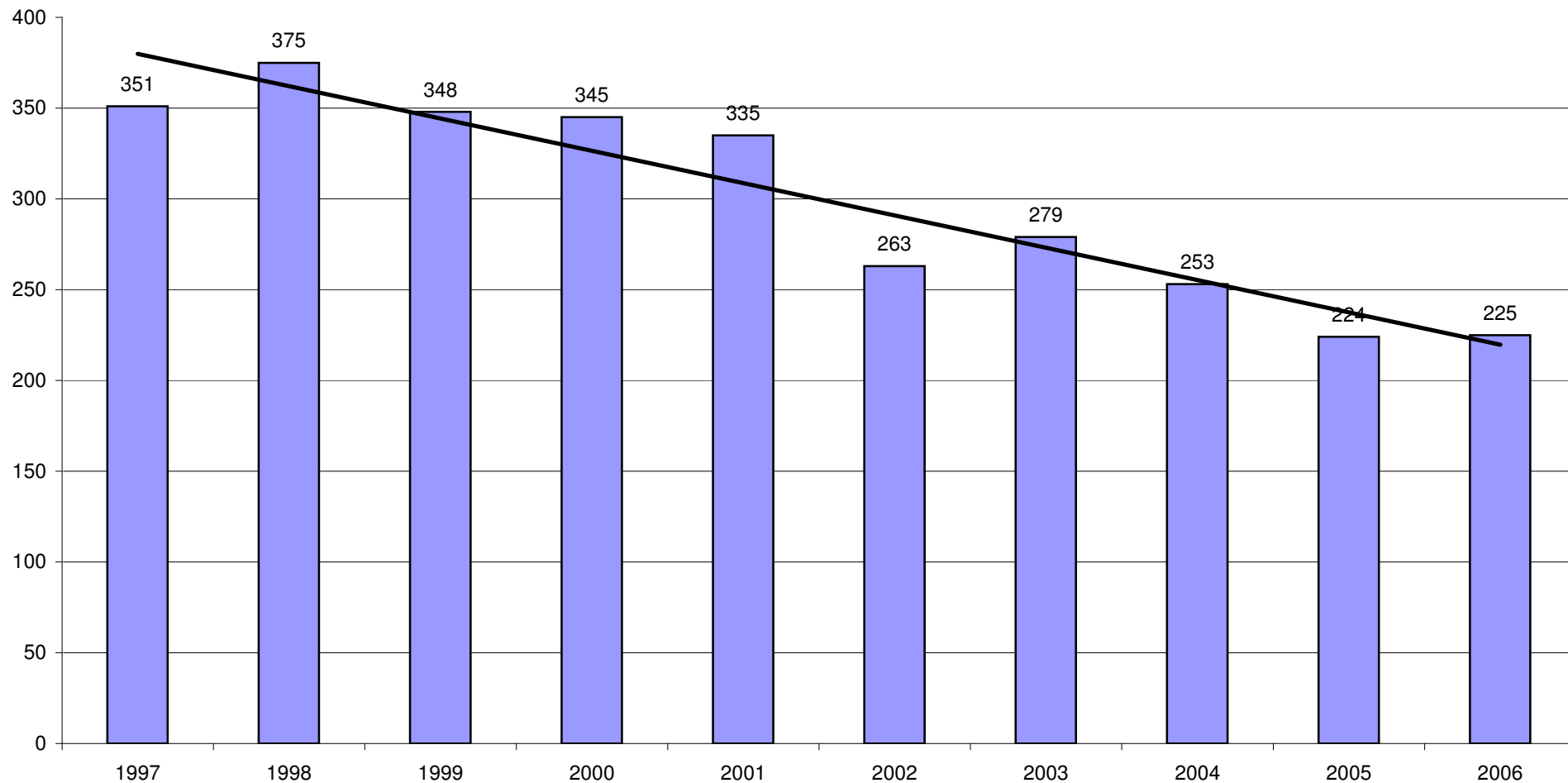
Chart 2 – Number on Roll in HMO and Applefields May 2006

Chart 3 – Projected Roll of Applefields from existing HMO intake only; assuming all Applefields pupils stay on to Year 14 assuming no new entrants from mainstream or special

Chart 4 – Projected Roll of Applefields: including current HMO intake and cumulative effect of 4 additional places per year

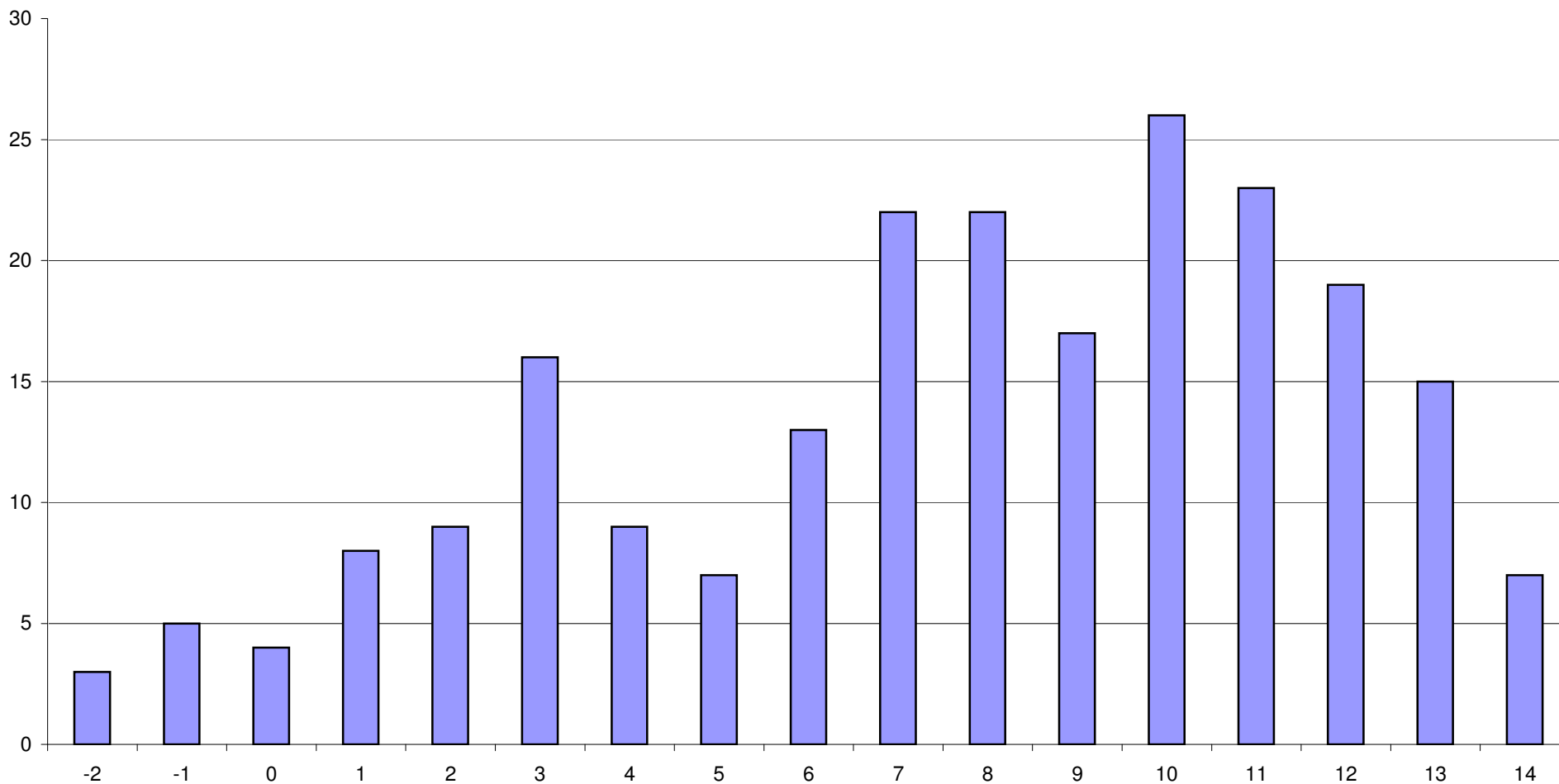
Chart 5 – Number of pupils in Year Groups 12-14 at Applefields

Number on Roll in Day Special Schools



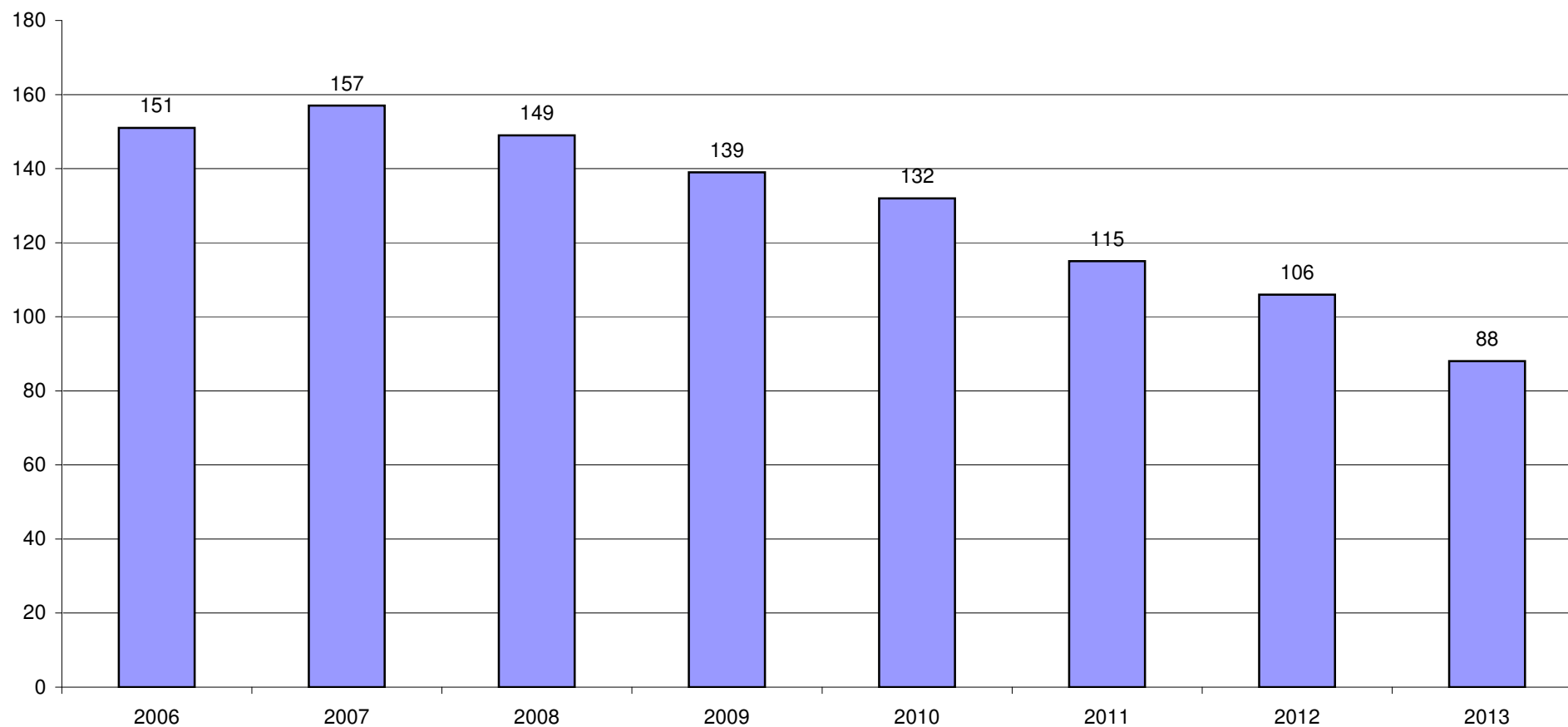
This page is intentionally left blank

Numbers on Roll in HMO & Applefields May 2006



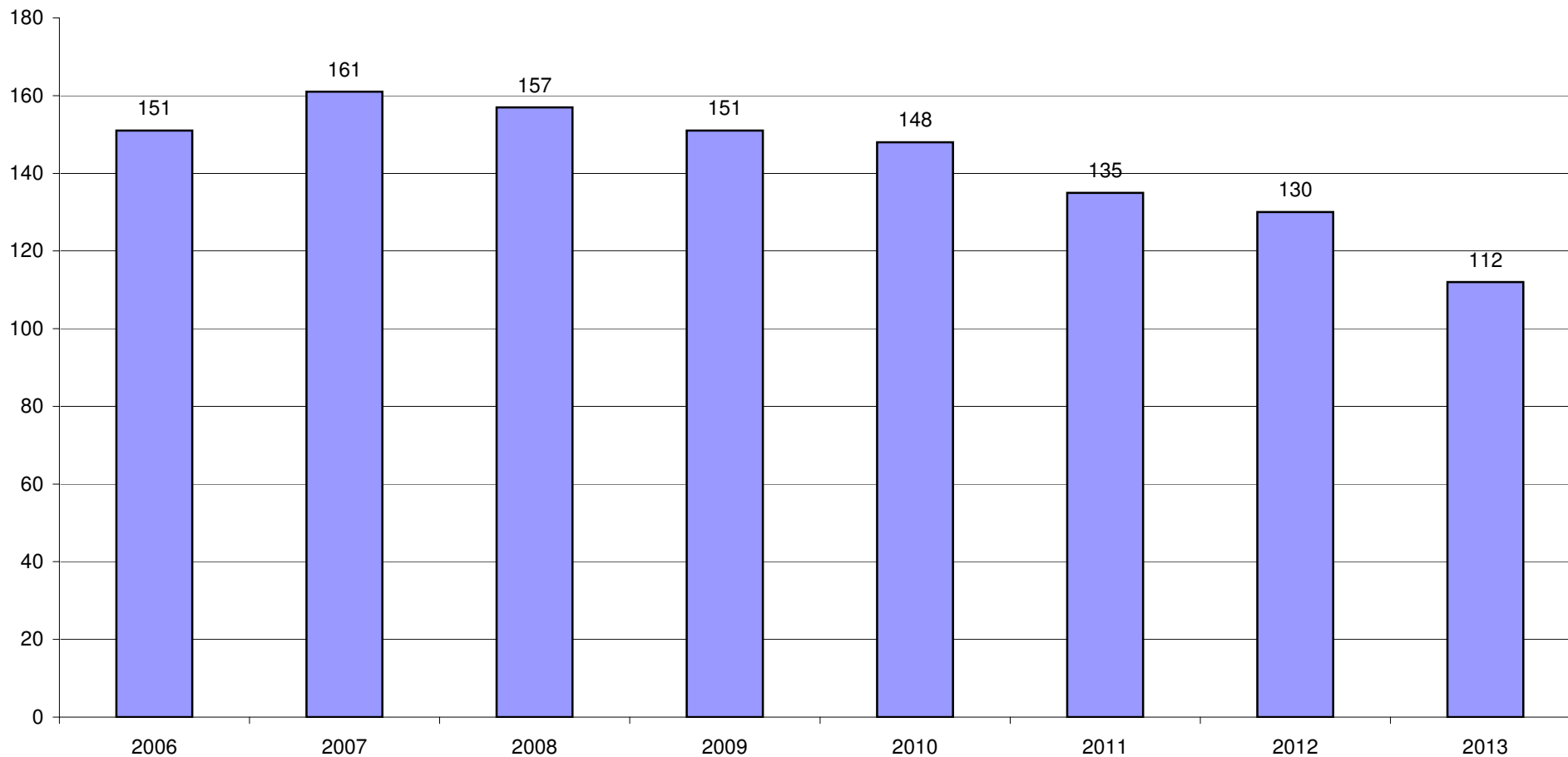
This page is intentionally left blank

**Projected Roll of Applefields from existing HMO intake only;
assuming all Applefields pupils stay on to Year 14
assuming no new entrants from mainstream or special**



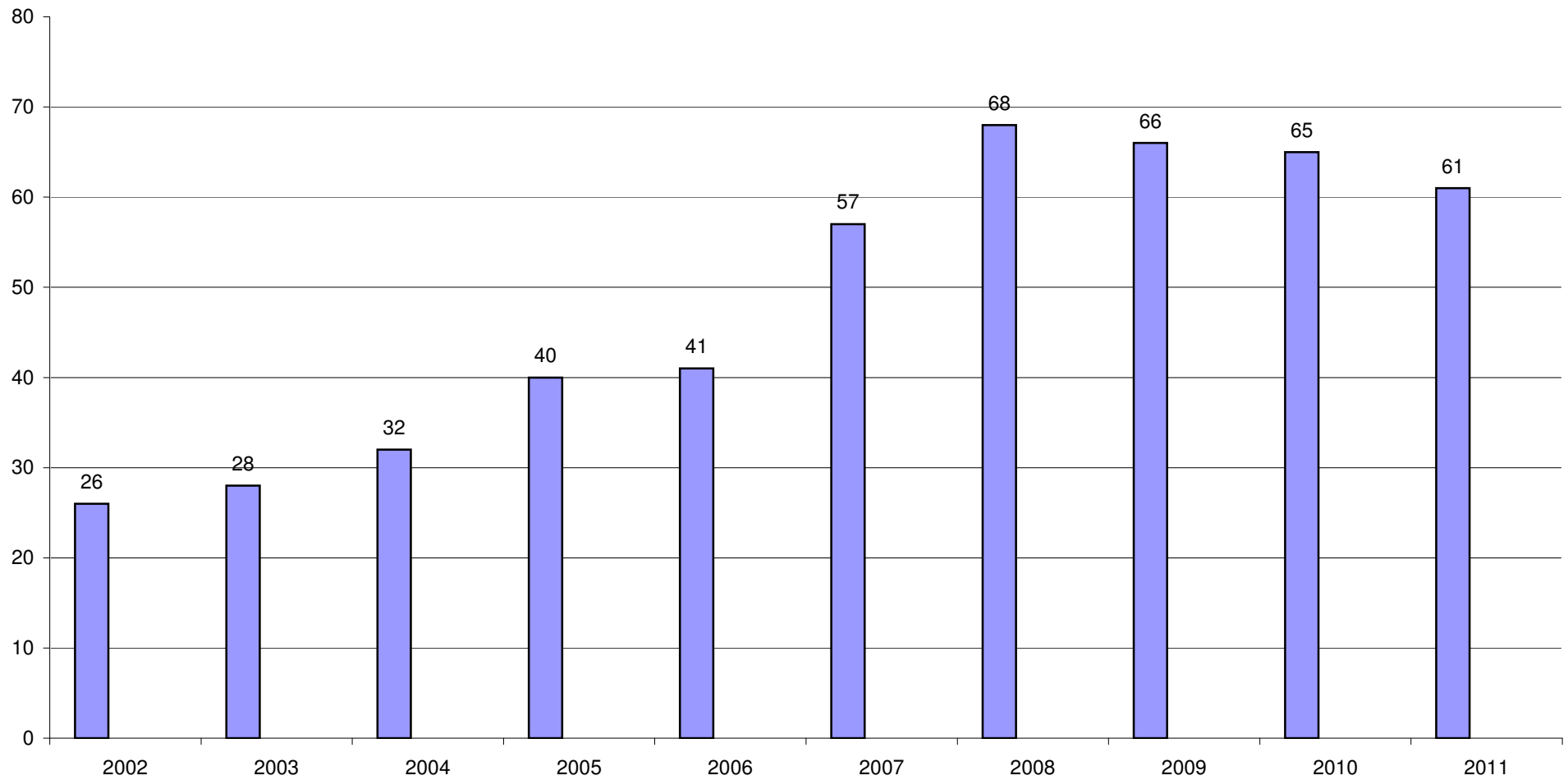
This page is intentionally left blank

Projected Roll of Applefields: including current HMO intake and cumulative effect of 4 additional places per year



This page is intentionally left blank

Numbers of pupils in Year Groups 12-14 at Applefields



This page is intentionally left blank

School Organisation Committee**21 June 2006****Report of the Governors of Manor CE Secondary School****Proposals for the Enlargement and Relocation of Manor Church of England Secondary School (VA)****Purpose of Report**

1. In seeking the approval of the SOC for the development of Manor CE Secondary School, the report informs the Committee about the reasons for the development and its three main purposes as follows:
 - Firstly, it is the Governors' wish to support the City of York Council's planned restructuring of education provision on the west side of the city. This has been driven by the Local Authority's need to remove surplus places where possible in order to achieve the Audit Commission's requirement of best value education consistent with raising standards.
 - Secondly, it is planned to replace the unsuitable and seriously undersized present school building, which is completely inaccessible for wheelchair users or others with mobility problems, with a new building to provide accessible education facilities for the children of York, appropriate to 21st century education standards.
 - Thirdly, Manor School has been consistently oversubscribed for many years, with up to 50 appeals in some years. It is hoped that the enlargement will allow those parents who wish to send their children to this popular and successful school to be able to achieve this wish, contributing to City of York Council's objective of meeting parental preference as far as reasonably possible.
2. The report informs the Committee of the outcome of the recent consultations, following the publication of statutory notices proposing the enlargement of Manor CE Secondary School from 630 places to 900 places and its relocation to a new building on a site off Millfield Lane (some 400 metres from the present location).
3. The report outlines the statutory procedures and possible timescales to be followed in securing the new site and building the new accommodation. It provides information concerning the funding grant from the Department for Education and Skills which has been achieved by the Diocese of York and the process of obtaining the grant over the period of planning and construction.

Background

4. After a number of years during which secondary school numbers have grown, the city now faces a period of contraction. In order to consolidate the provision of education for about 1800 children from the west side of York over the next decade, it has been necessary to undertake a major review of possible solutions. Consultations and discussions between the Local Authority, the Diocese of York and the schools concerned, undertaken over the last 3/4 years,

have led to the proposals for a new secondary school for the combined pupil populations of Lowfield and Oaklands and an enlargement of Manor School which requires relocation on a new site.

5. Discussions between the Diocese of York and the Governors of Manor School have also taken place over a similar period about the unsuitable nature of the present school building. There has been considerable concern over the limitations it places on sports activities and community access in particular and its overall inaccessibility and failure to meet modern building standards. Built in the 1960s, originally for 350 children, piecemeal extensions and additions on a number of levels have been added to accommodate, with difficulty, its present population of 630 children.

Statutory and other Local Consultations

6. Two Ward Committees in Poppleton and Acomb Wards have been held. The responses at the meetings were overwhelmingly supportive. The only concern consistently raised was that sufficient thought and planning should be given to the management of traffic and safe access to the new school. (In the light of that, the Committee will wish to be reassured that a traffic consultant, who will be obliged to work with the Local Authority Highways Division to achieve a satisfactory and safe outcome, is about to be appointed by the architects to the scheme. It is hoped that the new arrangement will improve the current, hazardous school access at the junction of Low Poppleton Lane and Boroughbridge Road,)
7. A meeting was held at the school for parents, prospective parents and local residents. A questionnaire was handed out to those present who were asked to return them to the school or the Diocese when completed. A summary of the overwhelmingly supportive response is attached as Annex 1. No objections were received.
8. Both local MPs, Hugh Bailey and Anne McIntosh, have been informed. Hugh Bailey has visited the school and has offered his strong support. During early discussions about the project, he was active in assisting the LA and the Diocese in their initial search for funds. Anne McIntosh is also supportive and will be visiting Manor School in the next few weeks.
9. Statutory Notices were published on March 23rd for the period of one month, in accordance with the requirements laid upon Governors of a Voluntary Aided school. Views and responses were directed, as legally required, to the Clerk of the SOC and no objections were received by the due date.

Pupil Numbers and Admissions Process

10. Following the Local Authority's proposal to the Governors of Manor School that the school should be enlarged to accommodate approximately 250 more children, the Governors resolved to meet the need. The successful funding bid was therefore made to effect the provision of a school for 900 children.
11. Manor School is a maintained secondary school and integral to the provision of mainstream education in the City of York. As a Church of England Voluntary Aided school, it also has close links with the Diocese of York which appoints its

Foundation Governors. Voluntary Aided school governors have additional responsibilities as part of their duties. Among these is the requirement to be their own Admissions Authority. Practice varies nationally and locally regarding admission zones for VA schools according to local conditions and historical arrangements. However, a number of them agree a Priority Admission Zone (PAZ). This is agreed with the LA and also meets Local Authority and Government aims to satisfy parental preference and local diversity of provision as far as possible. As a VA school, Manor has agreed a PAZ on boundaries identified in Annex 2 and whilst maintaining an appropriate balance of foundation and community places, will establish policies to maximise the admission of children from its PAZ.

12. Within the legal framework of the School Standards and Framework Act 1998 and the agreed planned admission number of 124, Manor currently sets the number of Foundation places at 74(60%) and the number of Community places at 50(40%). Governors also set out the criteria by which their Foundation places are allocated, related largely to regular parental Church attendance. Many of the Foundation places are allocated to children who are already resident within the school's Priority Admission Zone. For the school year September 2005 - July 2006, for example, places were allocated as follows:

Community	50 (40%)
Foundation within PAZ	46 (37%)
Foundation outside PAZ	28 (22.5%)

The Governors believe that the maintenance of their Foundation places plays a significant part in securing the ethos as a Church school. The Admissions Policy is consulted upon locally as statutorily required and is subject to annual review and revision. From 2009 Manor is proposing that the PAZ will account for 49% of its places as well as those from the PAZ that are successful in obtaining a foundation place.

Financial and Grant Aid arrangements

13. VA grant funding arrangements are very complex and are largely dealt with by the Diocese and a dedicated section of the DfES at Darlington. In April 2005, the Diocese of York prepared and submitted a Targeted Capital Funding bid (TCF) to the Voluntary Aided Capital Funding team in the DfES. In October 2005, it was announced that the bid, amounting to a value of £17.5 million, was successful and that £13.8 million grant aid would be allocated to add to the required Governors' liability of £3.7 million. In the case of TCF, the normal statutory Governors' liability of 10% is added to by a further 10% match funding, making 20% in all for the Governors to source.
14. In order to meet their liability, the Governors need to generate £3.5 million from the proceeds of sale from the present site. The site is in the joint ownership of the Diocese and the Local Authority. The rules of the Targeted Capital Fund only allow Governors to meet their 10% of match funding through proceeds of sale, but not their statutory 10%. To achieve the project, it has been requested that the LA meets the Governors' statutory 10% from their share of the proceeds of sale, which is allowable under the rules. It is understood that this matter is shortly to be resolved.

New School Design

15. With support from the Diocesan Education team throughout the project, the new school will be designed and project managed by a recommended architect with education experience and excellent reputation. The architect is also known and approved by the City of York Council through his work on the City's recent schools PFI scheme, more particularly through his design of the Hobmoor Children's Centre. As with all Voluntary Aided projects, the design and the management of the finances are overseen by the DfES own architects, Norfolk Property Services who must approve every aspect of the project before funding is released on an interim payment basis through the Diocese.
16. It is planned to produce a landmark building design for a sustainable school with excellent facilities for IT, science and technology, the humanities and sport. The hub of the school is planned to be its Learning Resources Centre and a state of the art Learning Support Unit for its special needs children. As a Performing Arts College, its drama and music facilities are planned to be an important aspect of the design, along with excellent social, dining and community facilities. It is hoped to provide good community access for a part of the city with limited facilities, especially through its sports and playing field provision, but also through its drama and music suite.
17. The Diocese has gained considerable experience of managing major school building programmes through its VA schools across the Diocese, including its own PFI scheme in Stockton on Tees in 2002/3.
18. A proposed timetable follows:

Date	Action
February/ September	<ul style="list-style-type: none"> • Appointment of Architect, commence planning process for site acquisition and design of new school
March/April 2006	<ul style="list-style-type: none"> • Publication of information document and statutory notices • Start of 4 week period for comments on the proposal. • Ward Committees and Information Event held at Manor School.
June 2006	<ul style="list-style-type: none"> • Report to SOC
September 2006	<ul style="list-style-type: none"> • Submission of Planning Application • Normal intake of 124 children
May 2007	<ul style="list-style-type: none"> • Subject to planning, construction work begins on site • Recruitment starts for the admission of 150 Year 7 pupils for September 2007
September 2007	<ul style="list-style-type: none"> • Admission of 150 Year 7 pupils
September 2008	<ul style="list-style-type: none"> • Admission of 150 Year 7 pupils
January/ March 2009	<ul style="list-style-type: none"> • Transfer to new school
September 2009	<ul style="list-style-type: none"> • Admission of 180 Year 7 pupils

- This suggests that the new school could be established in January/March 2009 (depending upon timely completion of new school building) with a

graduated intake over the intervening period to absorb all necessary admissions. It is well understood that the planning process is complicated by the green field/green belt nature of the site and every effort is being expended to achieve a successful outcome. The Diocese, the Local Authority and the Governors of the school are working in close partnership to put as much support into the project as possible.

Conclusion

19. The Governors of Manor School have been happy to work with the Local Authority and the Diocese of York in helping to resolve some of the school planning issues on the west side of the city. The school is popular and successful and wishes to offer its particular strengths and ethos to a wider range of children than has hitherto been possible because of the limitations of its site and its buildings. As with most small schools nationally, its budget is very limited and it recognises the need to update its facilities and environment to provide a truly modern and progressive education. This can only really be achieved through a replacement of the present building. The Governors are anxious to extend the ethos and opportunities provided by the school to as many of the children of York as the Authority requests of it in the number of places it can safely offer. Its Foundation places are there to retain its ethos and its distinctiveness as a Church school, particularly in view of an expansion of its numbers. They are not intended to be there as a covert means of selection.

Recommendations

20. Following publication by the Governors of Manor School of Statutory notices on March 23rdth and in accordance with the School Standards and Framework Act 1998 the Committee is asked to approve the following change to school organisation in the City of York:

The enlargement of Manor CE Secondary School to a 900 place school, to be achieved by increasing its Admission number by 56 children to 180 in September 2009 from 124 in 2006.

The Committee is also asked to note the following:

- The relocation of the school to the new site off Millfield Lane, subject to Planning Permission
- To note that no objections were received during the four week statutory “representation” period following publication of statutory notices
- To note the strong support of the parent body
- To note that no objections were received during the local consultation period following meetings and the wide circulation of an information leaflet produced by the school and the Diocese.

This page is intentionally left blank

**Results of the Public Consultation regarding
the expansion and relocation of
Manor CE School
February – March 2006**

In mid February 2006 the governors of Manor CE School, together with the York Diocesan Board of Education, began a public consultation regarding the expansion and relocation of the school. The two bodies produced a consultation leaflet outlining the proposals to expand the number of students from the current 636 to 900 and to move the school to a new building on the Millfield Lane site. Statutory notices were published regarding the expansion of the school. Because of the close proximity of the new site there was no requirement to publish a notice regarding the relocation.

The school hosted a public consultation evening on 28 March at 7.00pm. This was well attended with 120 members of the local community present. Those in attendance represented local residents, parents of current students and prospective parents. Patrick Scott, Director of Children's Services and Brian Crosby, Headteacher of Manor CE School spoke to the meeting. Ann Lees Diocesan Director of Education and Dorothy Dellow, Consultant were also present to answer questions.

The school issued a questionnaire to all parents via the students. Some 400 questionnaires were sent to families in the school. There were 175 responses. At the public meeting questionnaires were distributed to all those present. In both cases the questions were the same. As part of the consultation evening the Headteacher asked those present to give an indication as to the feeling of the meeting. A show of hands indicated that those present were overwhelmingly in favour of the two proposals being discussed. Those present showed by 120 to 0 a desire to see the school expand and 116 to 4 wanted to see the school move to the Millfield Lane site.

Results of consultation

Parental View – 175 responses

Proposal	Strongly agree	Agree	Disagree	Strongly disagree	No opinion	Total
Expand the school to 900	72	74	12	4	13	175
% response	83.4		9.1		7.4	100
Move the school to Millfield Lane	109	51	6	2	9	175
% response	91.0		4.5		4.5	100

Public View – 66 responses

Proposal	Strongly agree	Agree	Disagree	Strongly disagree	No opinion	Total
Expand the school to 900	60	6	0	0	0	66
% response	100		0		0	100
Move the school to Millfield Lane	62	4	0	0	0	66
% response	100		0		0	100

Issues raised

As well as being asked to vote on the proposals the parents were invited to make written comments about the proposals. The responses revolved around a number of main themes. These are identified below.

In favour of the proposals (91%)

Parents felt that:

- The new build was needed to provide the facilities required for the most up-to-date teaching
- This was a wonderful opportunity to provide more students with the high quality education currently on offer at Manor
- The move should go ahead but that the ethos was the most important aspect of the school and should be retained at the new school
- It would provide much needed additional resources for the local community

Against the proposals (4.5%)

Parents felt that:

- The school could easily lose the ethos in a larger school
- The disruption caused to their child's education would be significant
- The travel to the school would be a difficulty as the ring-road is already over-crowded (this was also mentioned by parents in favour of the development)
- The barrier crossing on the railway line was not safe for the volume of traffic

Brian Crosby
Headteacher
11 May 2006

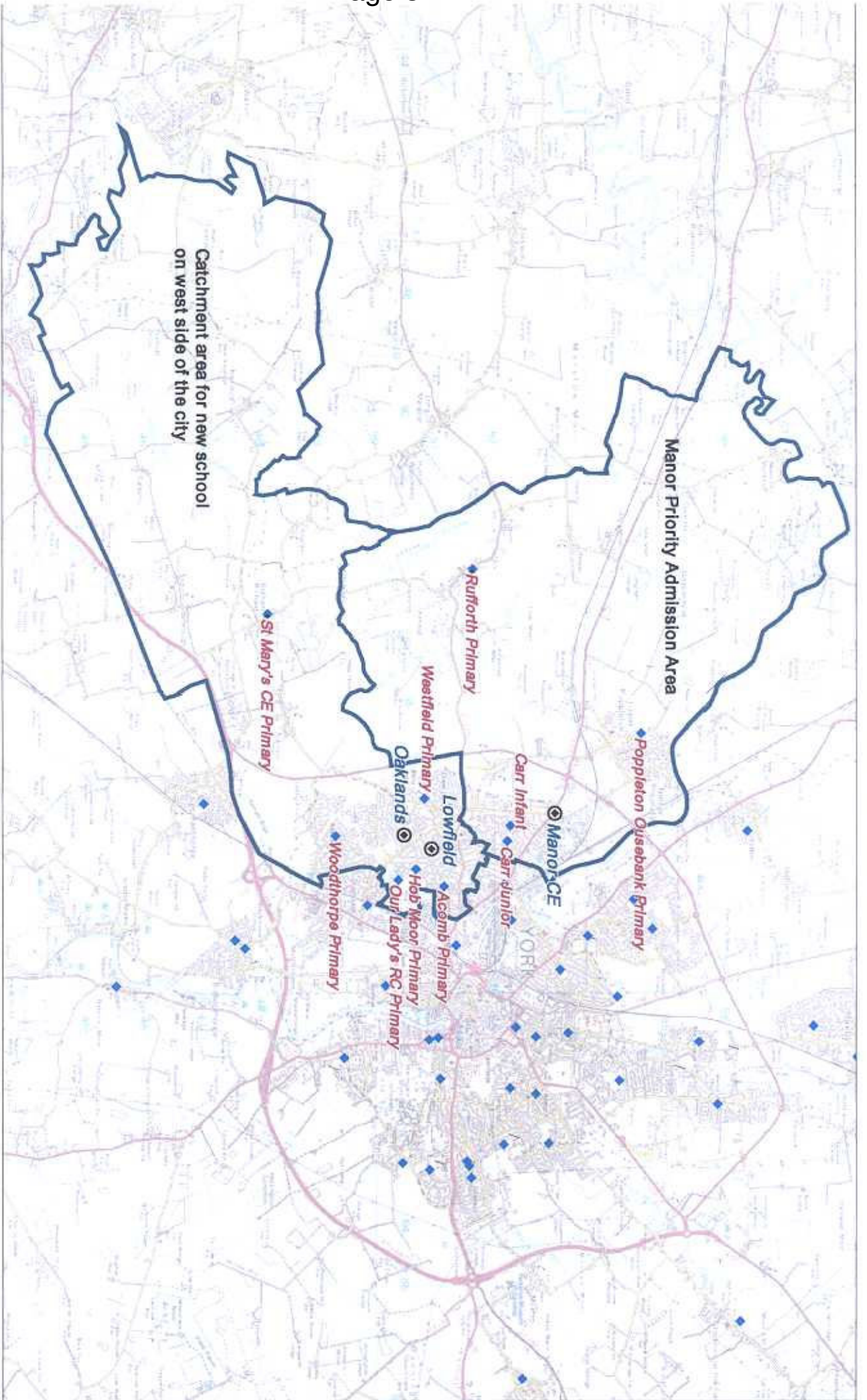
Consultation Evening

28 March 2006

Responses

1	It is a shame not to have a swimming pool. Fitness gym – open to both pupils and public – maybe in partnership with a private firm. Concerns about disruption to Year 10 and 11
2	We have worries regarding the large lorries travelling on Millfield Lane
3	Look at possibilities of including VIth Form
4	A wonderful opportunity for the future of education on this side of the city. Although expansion will be essential I feel this idea of a VIth Form may be better served elsewhere in this city and you should concentrate on the future of this Manor as a school.
5	Investigate “right of way” seen on old map across the fields – might be useful – I am selling my bungalow (too isolated for an elderly lady).
6	What if any screening will be between my home, next to the proposed school. I would also consider selling my acre site to you.
7	We have children in years 1 and 2 at Poppleton Primary and are very positive towards the new proposals. We feel that it would be an opportunity missed not to have a VIth Form facility and no swimming facility.
8	The 2 nd question is rather unfair since there are no alternatives! We should provide for a VIth Form, even if not built now.
9	I hope the transport plans actively encourage travel by sustainable means, not by car.
10	Ex-pupil with a two-year-old son who would love to see the school expand and improve. I fully believe the new site and school will achieve this.
11	Having two boys that would like to attend Manor in the near future and being an ex pupil myself, my husband and I welcome a new larger school in our community.
12	Concerns over the safety of children travelling to and from school. We think this is going to be a wonderful opportunity for all the children and as a former pupil myself I think it is long over due! A VIth Form on site would be a major boost to the whole economy. Please think about this.
13	We strongly support this project and hope that all we have loved about Manor will be maintained as it is made available to more students. A point about safe travel – it has been mentioned that the vast majority live within 1.5km of school. Can the travel plan therefore encourage walking and cycling, rather than car use. VIth Form – I recognise this may not be a realistic possibility. However, having experience another school VIth Form in York and VIth Form college with out two older children, we would favour this option at Manor.
14	Ensure that safety of children is considered bearing in mind the type of level crossing that exists at the moment and the likely increase in vehicular and pedestrian use.
15	My husband and I very much support the development of Manor to support the education of local children and the development of this specific piece of green belt to facilitate that seems to be quite acceptable.
16	No objection to development of the green belt, very supportive of expanding Manor to accommodate more local children.
17	Seems shortsighted not to look at incorporating a VIth Form into a brand new school on west side of York. With regard to future requirement/need this definitely needs to be considered.
18	I am concerned as to access to the new site. Will the opening at Millfield Lane/Low Poppleton Lane to be opened up. If so, will the junction to Beckfield Lane be altered.
19	All very exciting. The VIth Form option ought to be considered fully.

20	Well done. Very exciting proposal. Congratulations to all. As a parent from Poppleton, it is good to hear that places will increase during transition period.
21	Sounds a fantastic opportunity not to be missed not only for Manor School excellent ethos and reputation but for future children of the Acomb area. Do you envisage in the future capturing the old civil service land?
22	I am concerned about the access to the new school, having a daughter who attends Manor already and the lack of cycle lanes along Beckfield Lane. There needs to be great improvements for cycles crossing Boroughbridge Road when the school moves to Millfield Lane.
23	The site is good and we look forward to the new school. The only concern to me is the level crossing barriers.
24	We need a VIth Form from day one.
25	Only concern would be towards traffic, but with careful forethought I'm sure this would be overcome.
26	Very informative meeting
27	Manor is a very good school and needs to expand keeping its expertise in this area.
28	Excellent initiative. Hopefully it will be ready for the 2008/09, with no "call in" by Mr Prescott.
29	Would like VIth Form as well. Better plans re: level crossing Millfield Lane / possibly manned. What will happen to house and bungalow on Millfield Lane, surely they will no longer want to be there – compulsory purchase!
30	Excellent opportunity. Time-scale is a major consideration for me as a parent of a child due to start secondary school in September 2008. If major delays I feel the five years in school would be unfortunately disrupted with missed opportunities.
31	We agree that the most important think to take with you is not the lighting but the ethos. We look forward to the opportunities this brings to make Manor even better. Thank you for organising this consultation. We are pleased (and relieved) to hear that you have identified many major concerns, e.g. disruption in moving to the new school; protecting the greenbelt and the need for a travel plan. However, we would like you to give serious consideration to a VIth Form. We feel a VIth Form would truly enhance the school and we would urge you to look into this further.
32	My concern is over interim admission to community places. As my eldest child is due to move to secondary school in 2007.
33	A much needed proposal for a new school, with improved facilities, to accommodate a larger intake of children from the local areas.
34	I really hope the larger numbers of pupils will not water down the ethos of the school. I also hope continued consideration will be given to expanding the school to include a VIth Form.
35	An excellent opportunity to provide modern education facilities, within a new, larger environment, to serve both the education population and the community as a whole.
36	Impressed with the enthusiasm of Brian Crosby and Patrick Scott and am sure the whole venture will work to the benefit of local students and the community in general.
37	Think the school should be extended to VIth Form. Very concerned about extra traffic on ring road.;
38	Providing the road lighting and paths are updated for safe access from Acomb. If a VIth Form college could be built there would be one either side of the city – easy access from Acomb.
39	We would welcome the expansion of this excellent school. It is already over-subscribed the clearly indicates the necessity for expansion. We live in Poppleton and whole-heartedly support Manor as the school of our choice.



This page is intentionally left blank